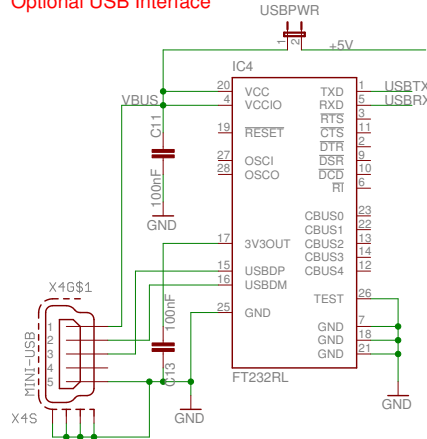
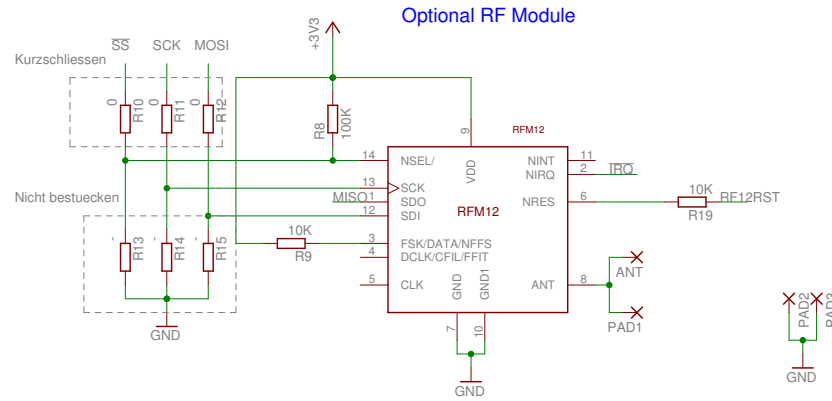


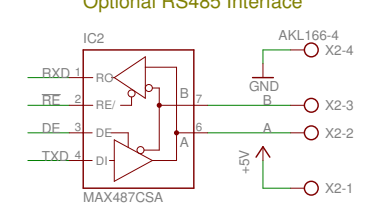
Optional USB Interface



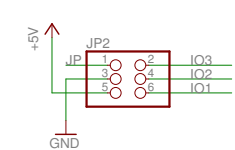
Optional RF Module



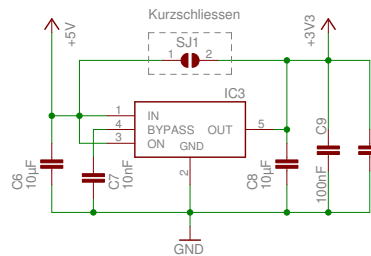
Optional RS485 Interface



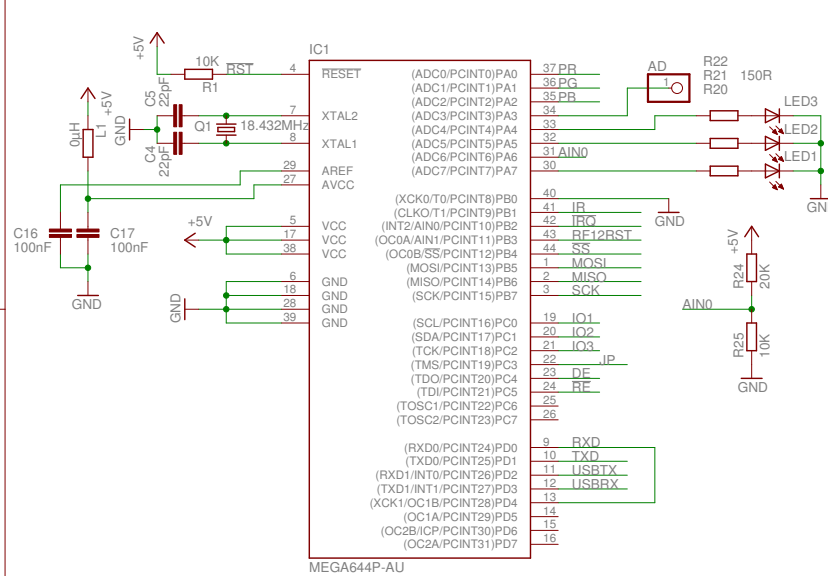
AUX



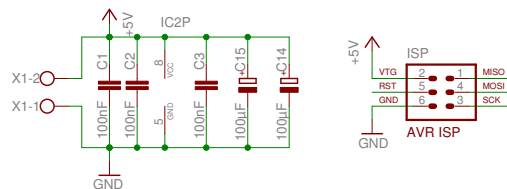
Optional 3V Regulator for RMF12



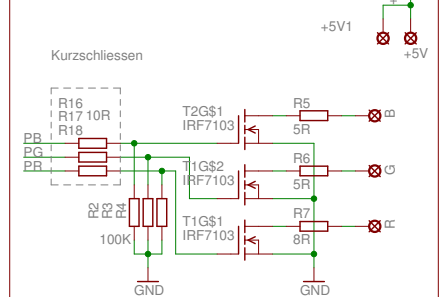
Base System



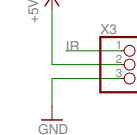
Power, ISP



RGB LED



Optional IR Sensor



V0.3

Tobias Schneider

ml-rf

22.02.10 20:46

LICENSE: CC-BY-SA 3.0 DE

Sheet: 1/1